

## Features

- RoHS compliant\*
- Low profile is compatible with DIPs
- Wide assortment of pin packages enhances design flexibility
- Ammo-pak packaging available
- Recommended for rosin flux and solvent clean or no clean flux processes

- Marking on contrasting background for permanent identification

## 4600X Series - Thick Film Conformal SIPs

### Product Characteristics

Resistance Range ..... 10 ohms to 10 megohms  
 Maximum Operating Voltage ..... 100 V  
 Temperature Coefficient of Resistance  
   50  $\Omega$  to 2.2 megohms ...  $\pm 100$  ppm/ $^{\circ}$ C  
   below 50  $\Omega$  .....  $\pm 250$  ppm/ $^{\circ}$ C  
   above 2.2 megohms .....  $\pm 250$  ppm/ $^{\circ}$ C  
 TCR Tracking ..... 50 ppm/ $^{\circ}$ C maximum; equal values  
 Resistor Tolerance ..... See circuits  
 Insulation Resistance  
   ..... 10,000 megohms minimum  
 Dielectric Withstanding Voltage  
   ..... 200 VRMS  
 Operating Temperature  
   ..... -55  $^{\circ}$ C to +125  $^{\circ}$ C

### Environmental Characteristics

TESTS PER MIL-STD-202 .....  $\Delta R$  MAX.  
 Short Time Overload .....  $\pm 0.25$  %  
 Load Life .....  $\pm 1.00$  %  
 Moisture Resistance .....  $\pm 0.50$  %  
 Resistance to Soldering Heat  
   .....  $\pm 0.50$  %  
 Terminal Strength .....  $\pm 0.25$  %  
 Thermal Shock .....  $\pm 0.25$  %

### Physical Characteristics

Flammability ..... Conforms to UL94V-0  
 Body Material ..... Epoxy resin  
 Standard Packaging  
   ..... Bulk, Ammo-pak available

### How To Order

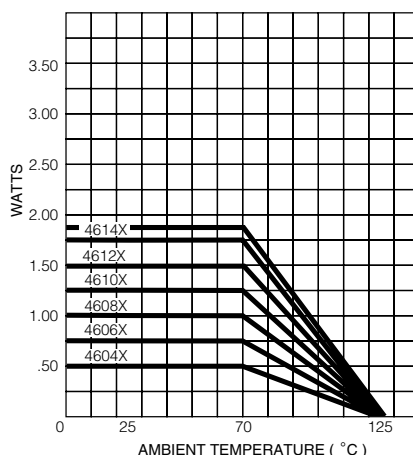
**46 06 X - 101 - 222 LF**

Model \_\_\_\_\_  
 (46 = Conformal SIP)  
 Number of Pins \_\_\_\_\_  
 Physical Configuration \_\_\_\_\_  
 (X = Thick Film Low Profile)  
 Electrical Configuration \_\_\_\_\_  
   • 101 = Bussed  
   • 102 = Isolated  
   • 104 = Dual Terminator  
   • AP1 = Bussed Ammo\*\*  
   • AP2 = Isolated Ammo\*\*  
   • AP4 = Dual Ammo\*\*  
 Resistance Code \_\_\_\_\_  
   • First 2 digits are significant  
   • Third digit represents the number of zeros to follow.  
 Resistance Tolerance \_\_\_\_\_  
   • Blank =  $\pm 2$  % (see "Resistance Tolerance" on next page for resistance range)  
   • F =  $\pm 1$  % (100 ohms - 5 megohms)  
 Terminations \_\_\_\_\_  
   • All electrical configurations EXCEPT 104 & AP4:  
     LF = Sn/Ag/Cu-plated (RoHS compliant)  
   • ONLY electrical configurations 104 & AP4:  
     L = Sn/Ag/Cu-plated (RoHS compliant)

Consult factory for other available options.

\*\*Available for packages with 10 pins or less.

### Package Power Temp. Derating Curve



### Package Power Ratings (Watts)

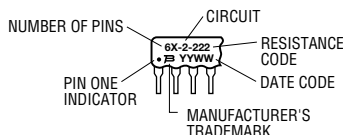
Pkg.	Ambient Temp. 70 $^{\circ}$ C	Pkg.	Ambient Temp. 70 $^{\circ}$ C
4604X	0.50	4610X	1.25
4605X	0.63	4611X	1.38
4606X	0.75	4612X	1.50
4607X	0.88	4613X	1.63
4608X	1.00	4614X	1.75
4609X	1.13		

### Typical Part Marking

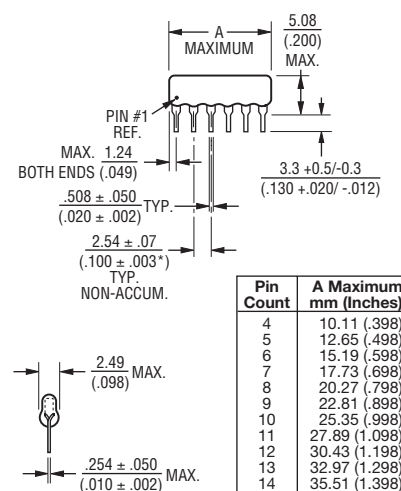
Represents total content. Layout may vary.

Part Number	Marking
4606X-101-RC	6X-1-RC
4608X-102-RC	8X-2-RC
4610X-104-RC/RC	10X-4-RC/RC

RC = ohmic value, 3-digit resistance code.



### Product Dimensions



Maximum package length is equal to 2.54mm (.100") times the number of pins, less .005mm (.002").

Governing dimensions are in metric. Dimensions in parentheses are inches and are approximate.

\*Terminal centerline to centerline measurements made at point of emergence of the lead from the body.

For Standard Values Used in Capacitors, Inductors, and Resistors, [click here](#).

For information on specific applications,  
download Bourns' application notes:

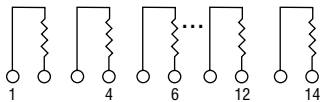
- [DRAM Applications](#)
- [Dual Terminator Resistor Networks](#)
- [R/2R Ladder Networks](#)
- [SCSI Applications](#)

## 4600X Series - Thick Film Conformal SIPs

**BOURNS®**

### Isolated Resistors (102 Circuit)

**Model 4600X-102-RC**  
4, 6, 8, 10, 12, 14 Pin



These models incorporate 2 to 7  
isolated thick-film resistors of equal  
value, each connected between two  
pins.

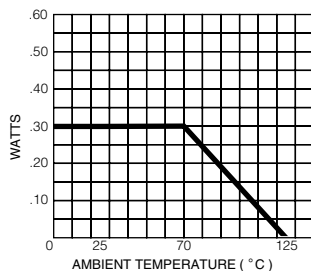
#### Resistance Tolerance

10 ohms to 49 ohms .....±1 ohm  
50 ohms to 5 megohms .....±2 %\*  
Above 5 megohms ..... ±5 %

#### Power Rating per Resistor

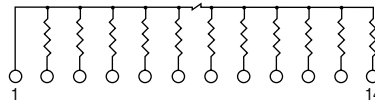
At 70 °C ..... 0.30 watt

#### Power Temperature Derating Curve



### Bussed Resistors (101 Circuit)

**Model 4600X-101-RC**  
4 through 14 Pin



These models incorporate 3 to 13  
thick-film resistors of equal value, each  
connected between a common bus  
(pin 1) and a separate pin.

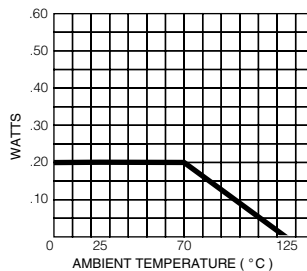
#### Resistance Tolerance

10 ohms to 49 ohms .....±1 ohm  
50 ohms to 5 megohms .....±2 %\*  
Above 5 megohms ..... ±5 %

#### Power Rating per Resistor

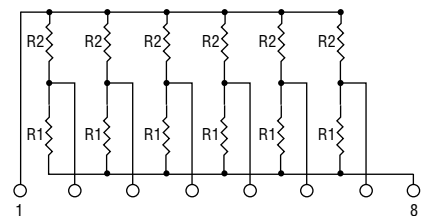
At 70 °C ..... 0.20 watt

#### Power Temperature Derating Curve



### Dual Terminator (104 Circuit)

**Model 4600X-104-R1/R2**  
4 through 14 Pin



The 4608X-104 (shown above) is an 8-  
pin configuration and terminates 6 lines.  
Pins 1 and 8 are common for ground  
and power, respectively. Twelve thick-  
film resistors are paired in series be-  
tween the common lines (pins 1 and 8).

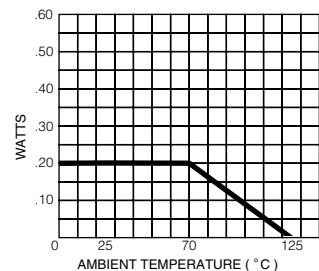
#### Resistance Tolerance

Below 100 ohms.....±2 ohms  
100 ohms to 5 megohms .....±2 %\*  
Above 5 megohms ..... ±5 %

#### Power Rating per Resistor

At 70 °C ..... 0.20 watt

#### Power Temperature Derating Curve



### Popular Resistance Values (101, 102 Circuits)\*\*

Ohms	Code	Ohms	Code	Ohms	Code	Ohms	Code	Ohms	Code
10	100	180	181	1,800	182	15,000	153	120,000	124
22	220	270	271	2,200	222	18,000	183	150,000	154
27	270	330	331	2,700	272	20,000	203	180,000	184
33	330	390	391	3,300	332	22,000	223	220,000	224
39	390	470	471	3,900	392	27,000	273	270,000	274
47	470	560	561	4,700	472	33,000	333	330,000	334
56	560	680	681	5,600	562	39,000	393	390,000	394
68	680	820	821	6,800	682	47,000	473	470,000	474
82	820	1,000	102	8,200	822	56,000	563	560,000	564
100	101	1,200	122	10,000	103	68,000	683	680,000	684
120	121	1,500	152	12,000	123	82,000	823	820,000	824
150	151					100,000	104	1,000,000	105

\* ±1 % tolerance is available by adding suffix code "F" after the resistance code.

\*\*Non-standard values available, within resistance range.

### Popular Resistance Values (104 Circuit)\*\*

Resistance			
Ohms		Code	
R <sub>1</sub>	R <sub>2</sub>	R <sub>1</sub>	R <sub>2</sub>
160	240	161	241
180	390	181	391
220	270	221	271
220	330	221	331
330	390	331	391
330	470	331	471
3,000	6,200	302	622

REV. 04/10

Specifications are subject to change without notice.  
Customers should verify actual device performance in their specific applications.

# Mouser Electronics

Authorized Distributor

Click to View Pricing, Inventory, Delivery & Lifecycle Information:

## Bourns:

[4608X-101-153](#) [4606X-101-561](#) [4605X-101-124](#) [4608X-102-304F](#) [4613X-101-681LF](#) [4606X-101-514](#) [4608X-102-304](#) [4612X-102-274LF](#) [4610X-101-111F](#) [4610X-101-271](#) [4608X-102-303F](#) [4610X-102-563F](#) [4610X-102-564](#) [4606X-102-101F](#) [4605X-101-272](#) [4605X-101-225](#) [4606X-102-821](#) [4606X-102-104](#) [4608X-1T1-102](#) [4610X-102-151](#) [4607X-101-104](#) [4614X-101-681](#) [4610X-102-111](#) [4608X-101-103F](#) [4606X-AP1-333](#) [4614X-102-823](#) [4604X-102-561F](#) [4610X-102-121](#) [4608X-102-184LF](#) [4606X-102-103F](#) [4606X-1T1-101](#) [4610X-101-513](#) [4608X-1T1-202](#) [4610X-102-101](#) [4610X-102-181](#) [4610X-101-563](#) [4606X-101-562LF](#) [4606X-102-562LF](#) [4608X-101-184LF](#) [4610X-102-161](#) [4608X-101-104F](#) [4610X-101-123](#) [4610X-101-183](#) [4609X-101-394LF](#) [4606X-102-104F](#) [4608X-101-561LF](#) [4608X-102-561LF](#) [4608X-101-101LF](#) [4608X-102-101LF](#) [4605X-101-333LF](#) [4611X-101-332LF](#) [4610X-101-153](#) [4609X-1T1-102](#) [4608X-104-302/622](#) [4611X-101-392LF](#) [4612X-101-824LF](#) [4608X-102-181LF](#) [4608X-101-181LF](#) [4609X-1T1-105](#) [4608X-102-121LF](#) [4612X-102-824LF](#) [4610X-AP1-473](#) [4614X-102-124LF](#) [4608X-101-121LF](#) [4606X-102-471](#) [4605X-101-393LF](#) [4614X-101-124LF](#) [4609X-101-821](#) [4610X-AP1-681](#) [4605X-102-393LF](#) [4606X-101-823](#) [4614X-102-473](#) [4610X-101-103](#) [4608X-102-151LF](#) [4608X-101-151LF](#) [4610X-101-683LF](#) [4610X-102-683LF](#) [4605X-102-333LF](#) [4604X-101-822](#) [4614X-102-182LF](#) [4605X-101-751](#) [4614X-101-182LF](#) [4606X-AP1-561](#) [4614X-101-122LF](#) [4614X-102-122LF](#) [4610X-AP1-201](#) [4612X-102-822LF](#) [4610X-AP1-202](#) [4614X-101-152LF](#) [4610X-101-251F](#) [4612X-101-822LF](#) [4614X-102-152LF](#) [4606X-1T1-102](#) [4608X-102-104LF](#) [4610X-AP1-273](#) [4608X-101-104LF](#) [4613X-101-474LF](#) [4606X-101-473](#) [4605X-102-222LF](#) [4604X-102-562](#)