

# PROOF OF CONCEPT V1

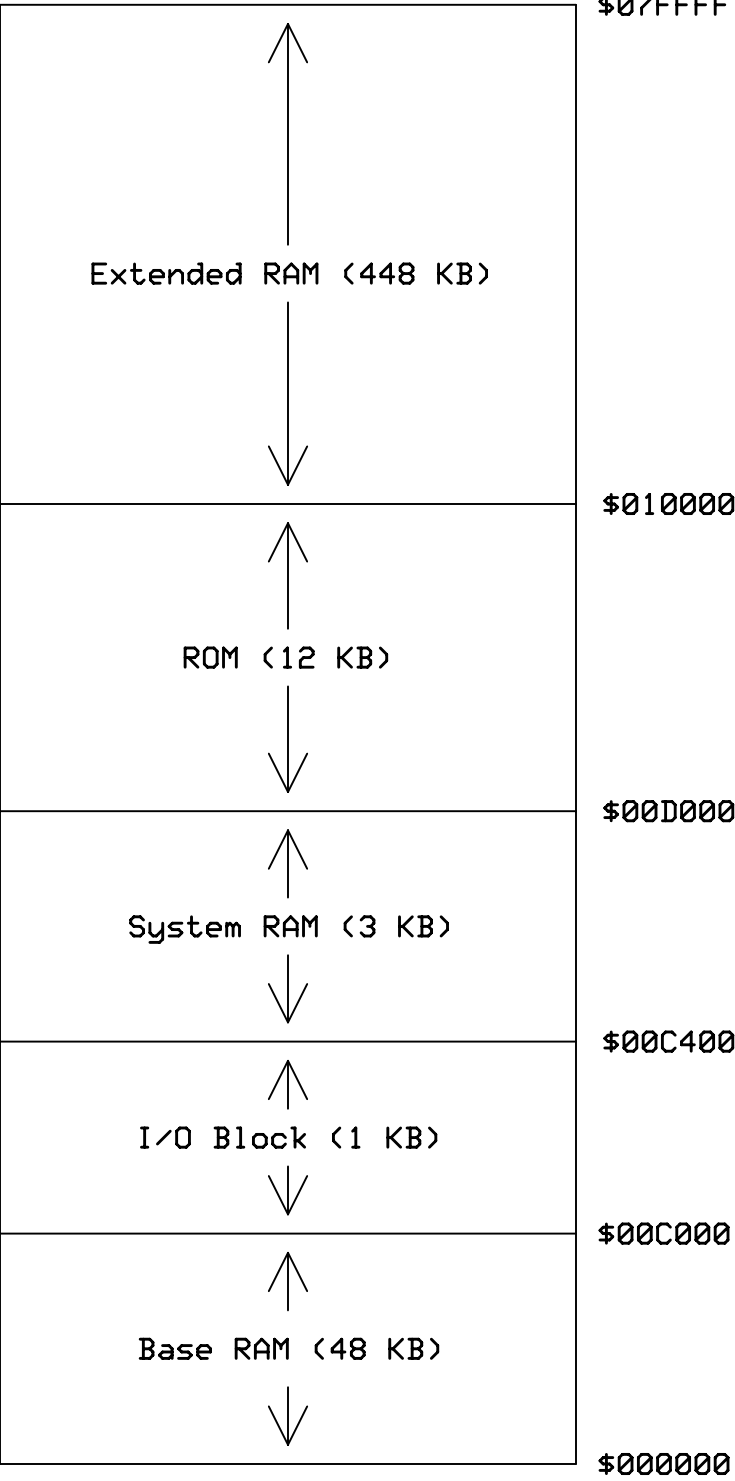
# SINGLE-BOARD COMPUTER

---

512 Kilobyte Static RAM System

Powered by the W65C816S Microprocessor

Designed by BigDumbDinosaur



MEMORY MAP

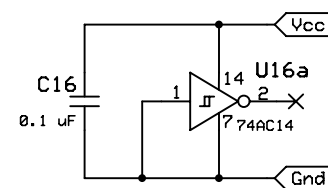
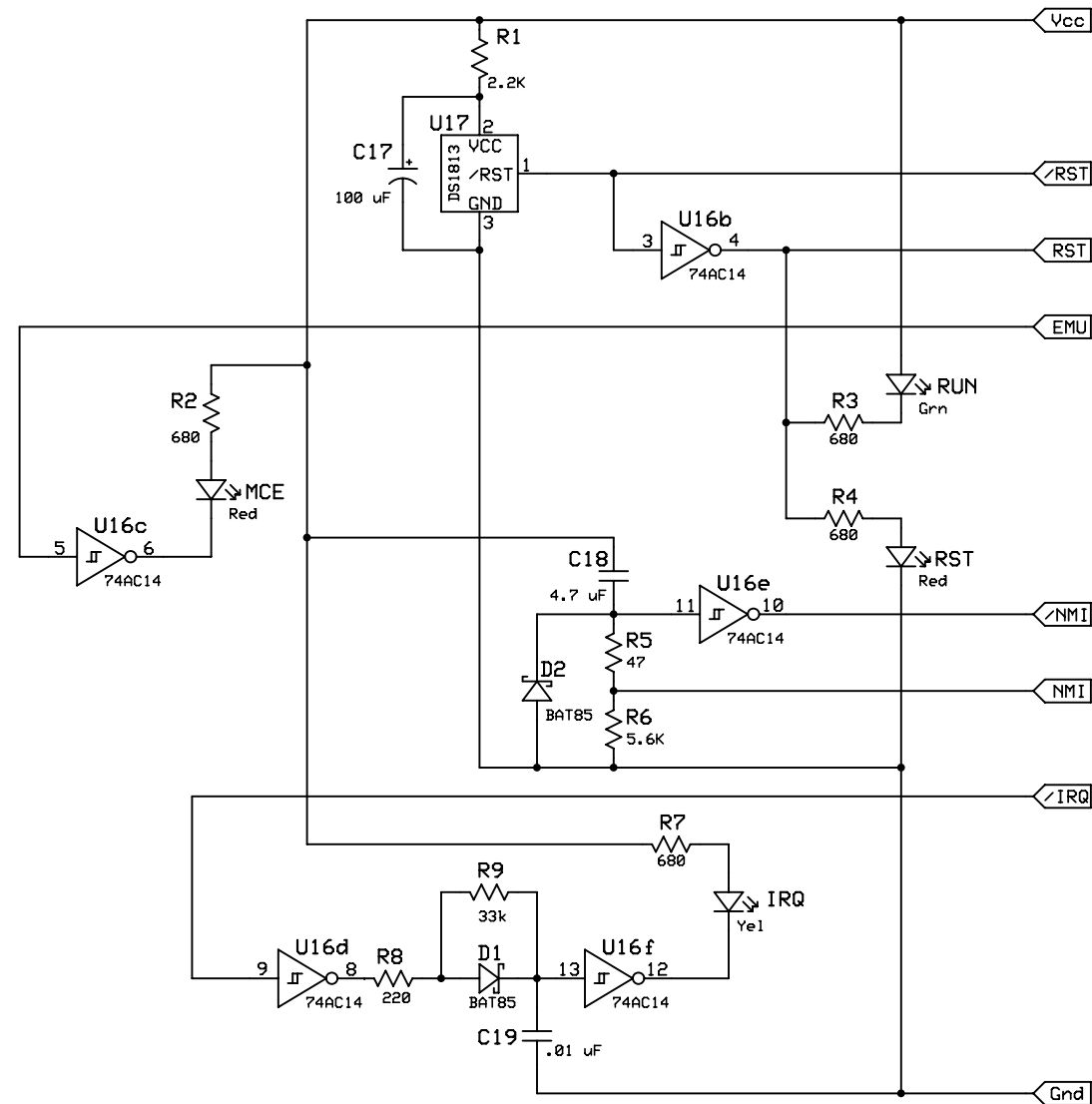
BCS Technology Limited		
W65C816S SINGLE BOARD COMPUTER		
BigDumbDinosaur	2024/01/01	Page 1 of 10
	Rev 1.5	

Undecoded	\$00C3FF
Expansion Select C	\$00C380
Expansion Select B	\$00C300
Expansion Select A <sup>1</sup>	\$00C280
Real-Time Clock	\$00C200
vQUART Channel IRQ Status <sup>1</sup>	\$00C180
vQUART Channels C-D, timer B	\$00C100
vQUART Channels A-B, timer A	\$00C080
	\$00C000

<sup>1</sup>Not wait-stated.

INPUT/OUTPUT MAP

BCS Technology Limited		
W65C816S SINGLE BOARD COMPUTER		
BigDumbDinosaur	2024/01/01	Page 2 of 10
	Rev 1.5	



# RESET, NMI, INDICATORS

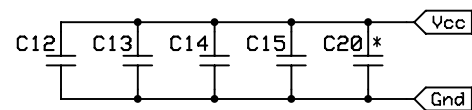
BCS Technology Limited

W65C816S SINGLE BOARD COMPUTER

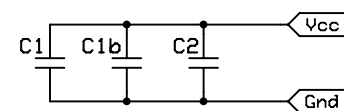
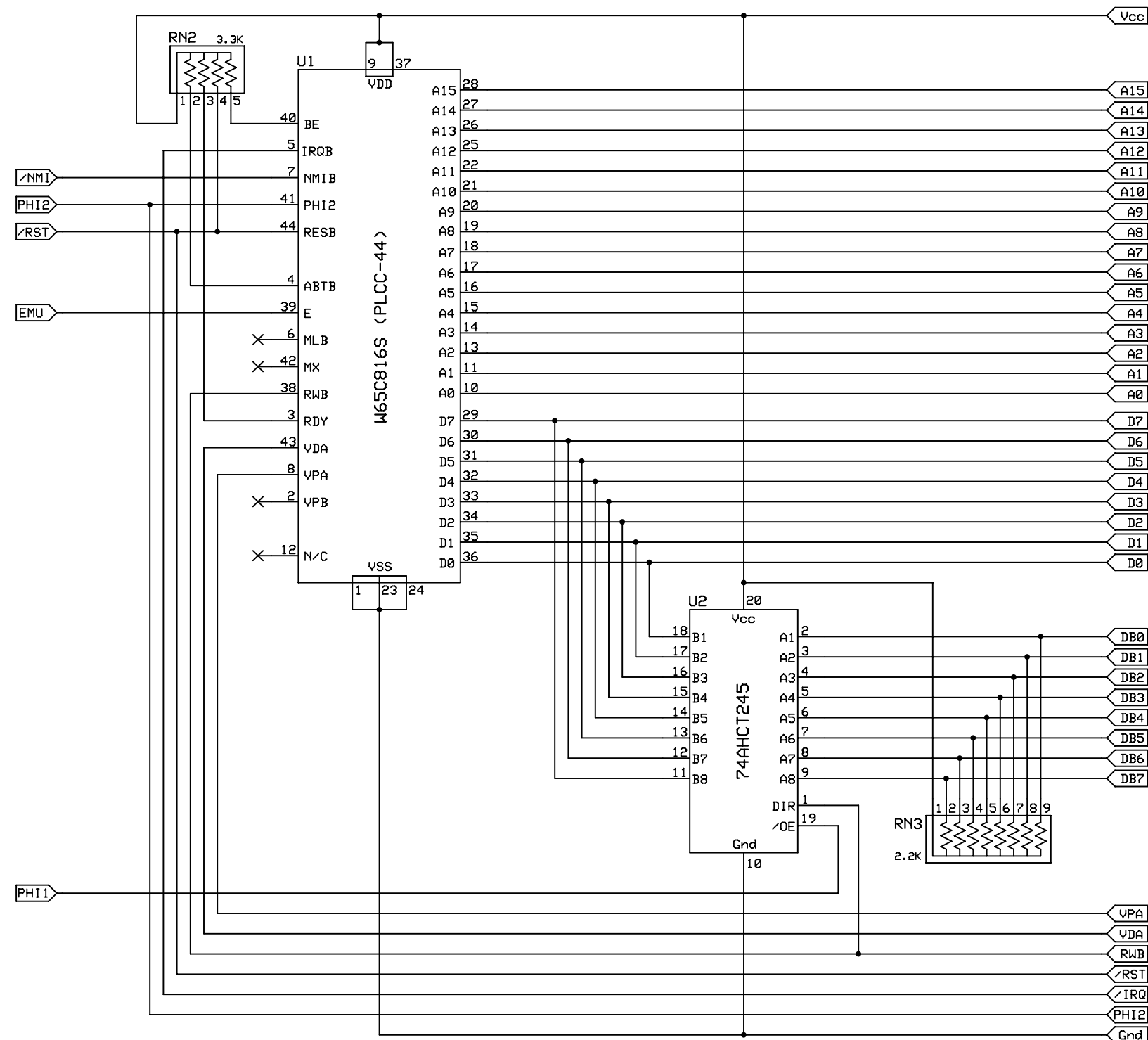
BigDumbDinosaur

2024/01/01  
Rev 1.5

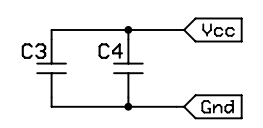
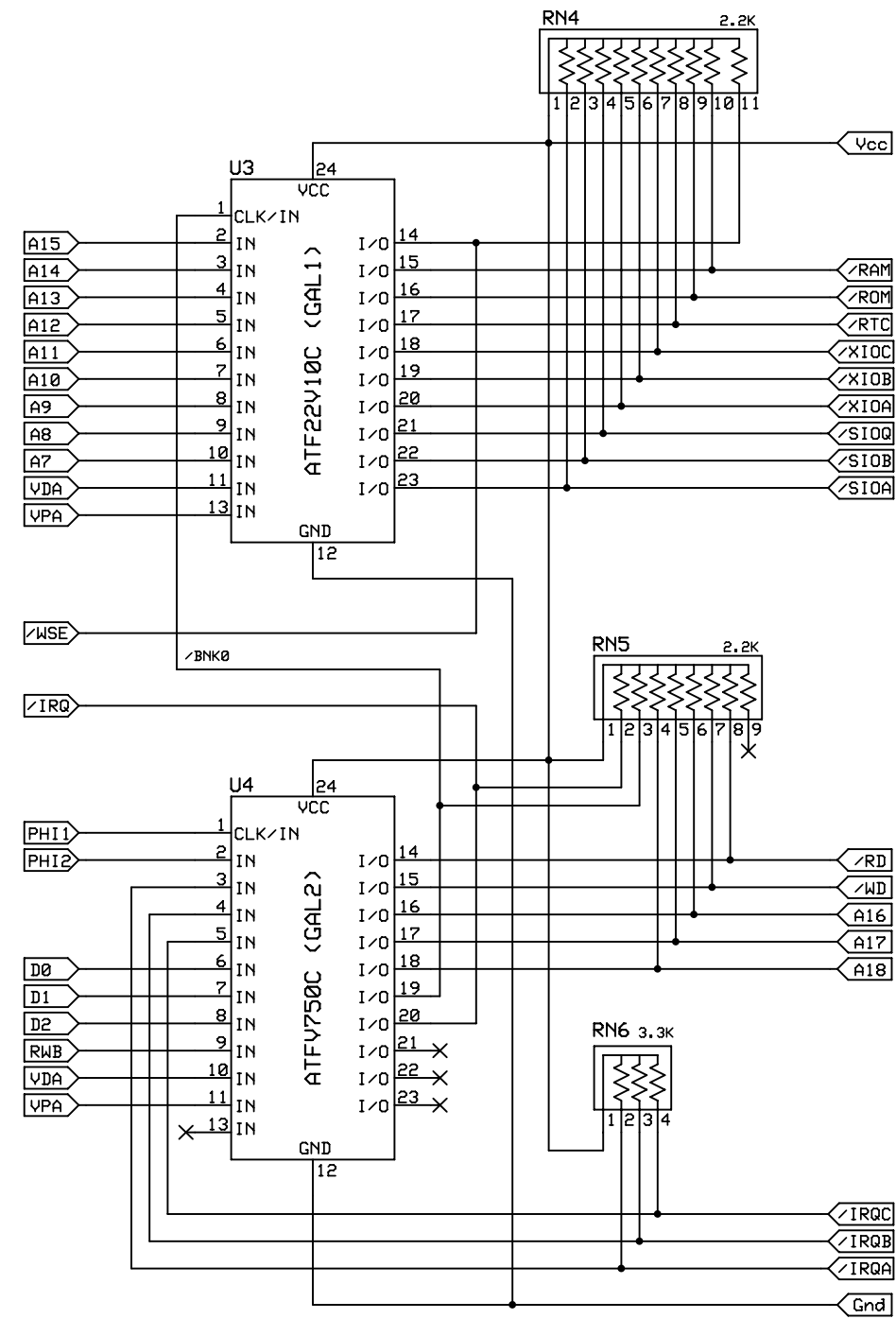
Page 3 of 10



\* C20 → Y1



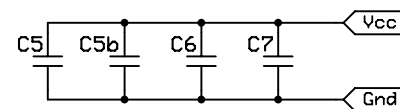
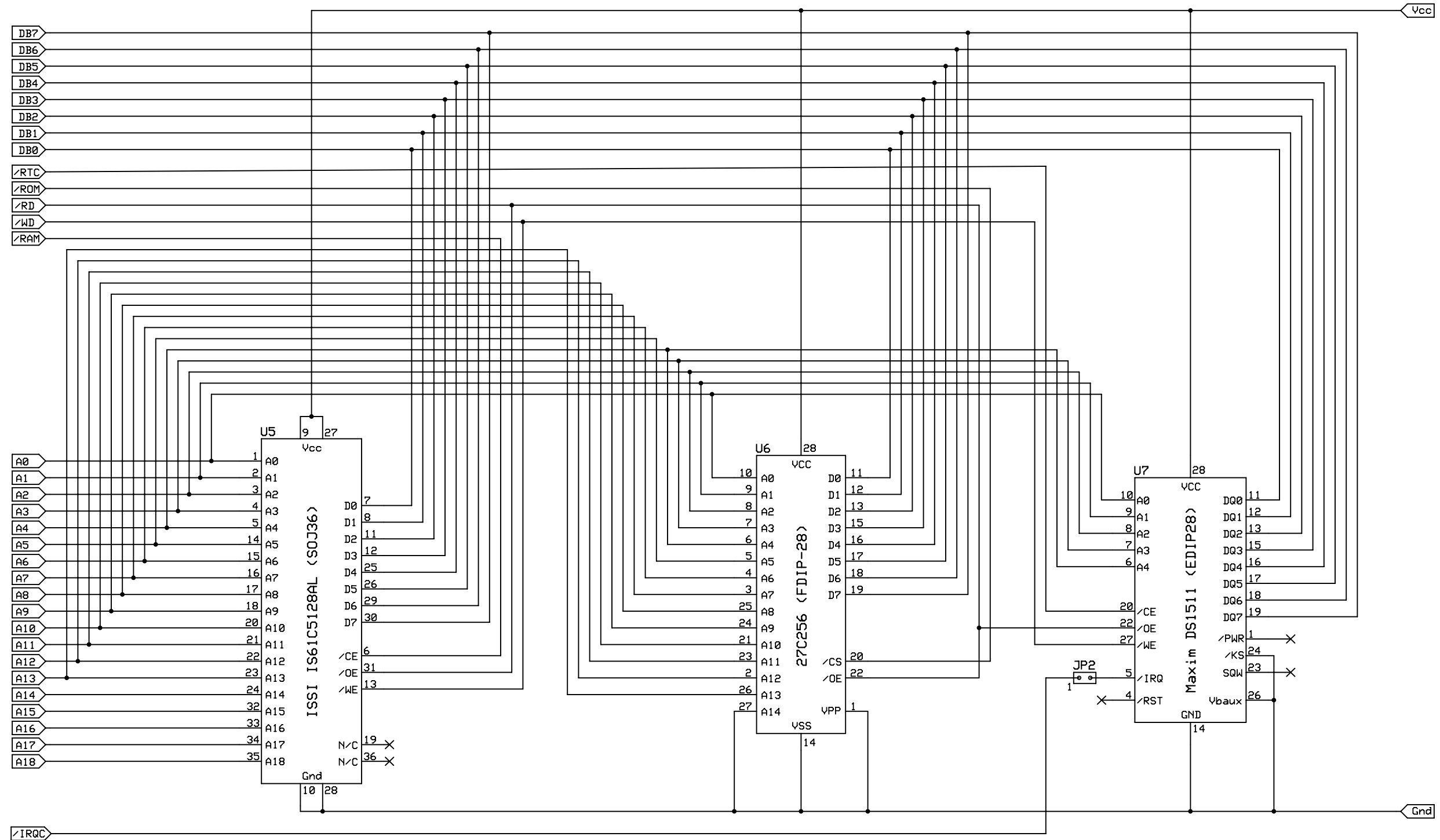
Decoupling Capacitors -- 0.1 uf @ 50v



Decoupling Capacitors -- 0.1 uf @ 50v

GLUE LOGIC

BCS Technology Limited		
W65C816S SINGLE BOARD COMPUTER		
BigDumbDinosaur	2024/01/01	Page 6 of 10
	Rev 1.5	



Decoupling Capacitors -- 0.1 uf @ 50v

RAM, ROM & RTC

BCS Technology Limited

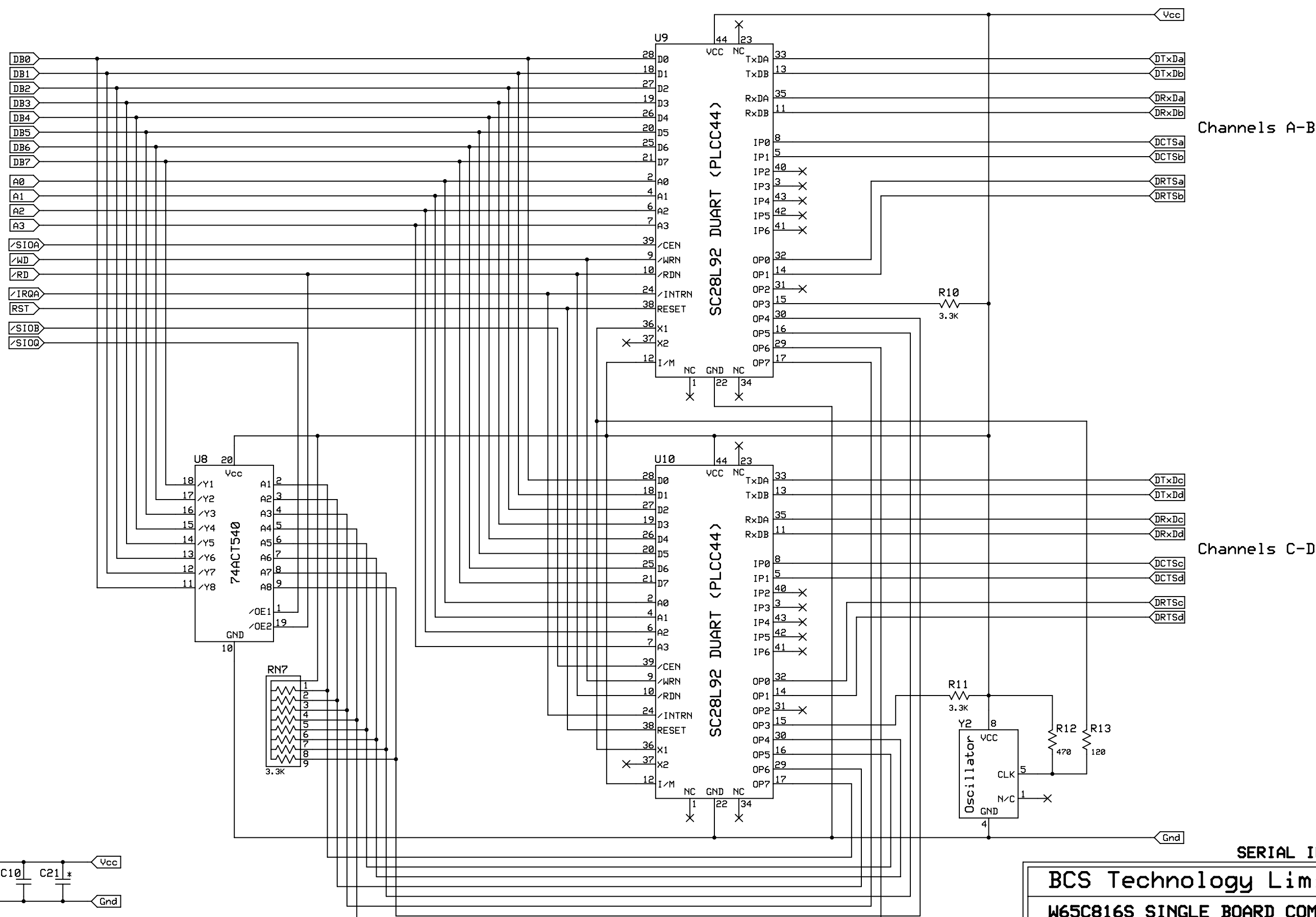
W65C816S SINGLE BOARD COMPUTER

BigDumbDinosaur

2024/01/01  
Rev 1.5

Page 7 of 10





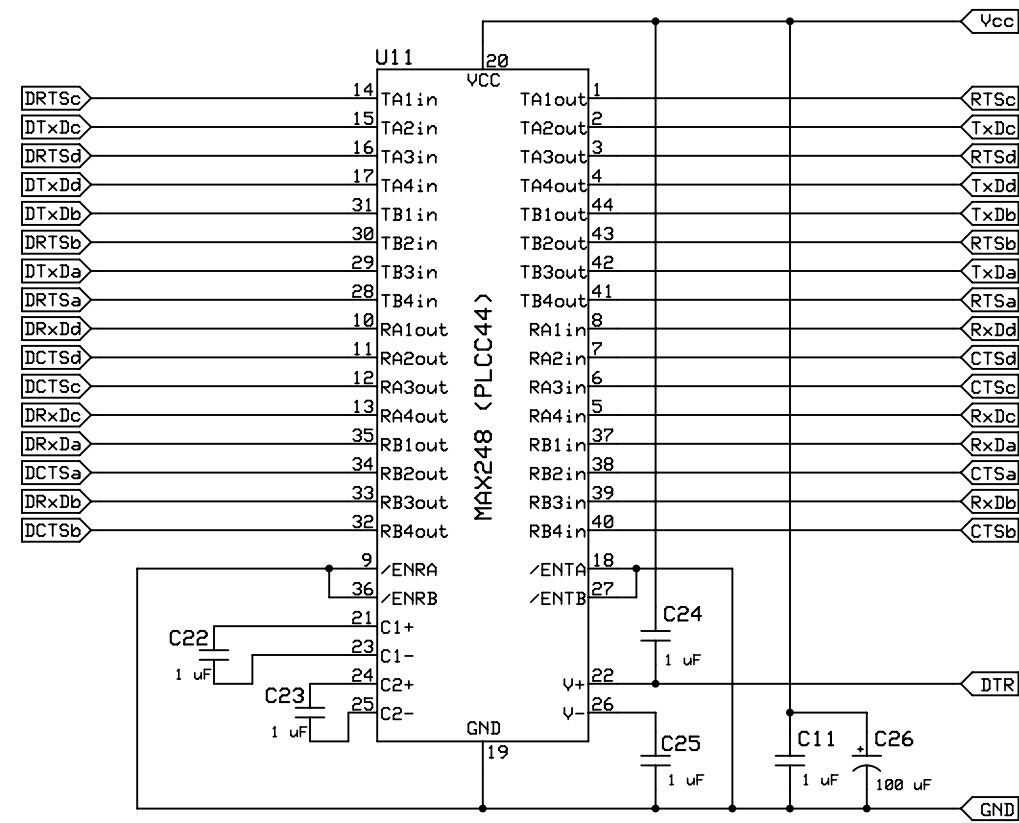
Channels A-B

Channels C-D

SERIAL INTERFACE

Decoupling Capacitors -- 0.1 uf @ 50v

\* C21 → Y2



TIA232 INPUT/OUTPUT

BCS Technology Limited

W65C816S SINGLE BOARD COMPUTER

BigDumbDinosaur

2024/01/01  
Rev 1.5

Page 9 of 10

